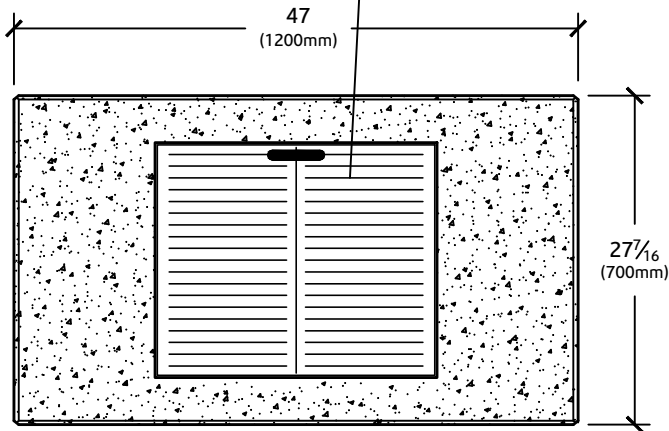
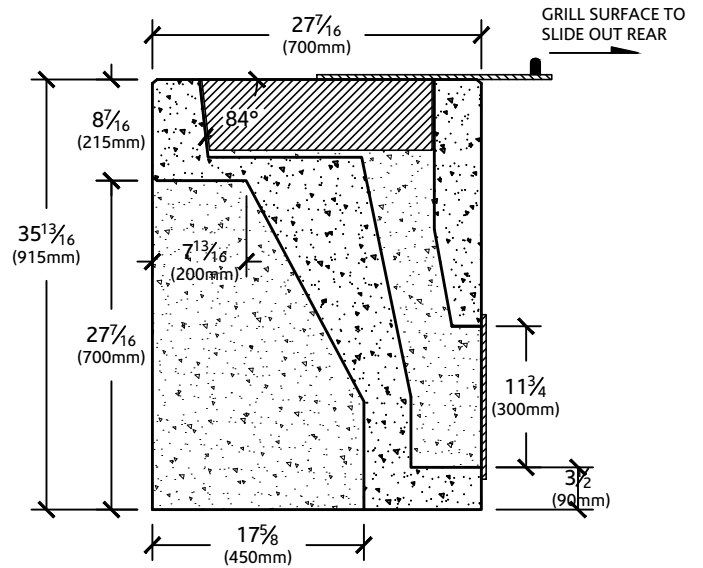


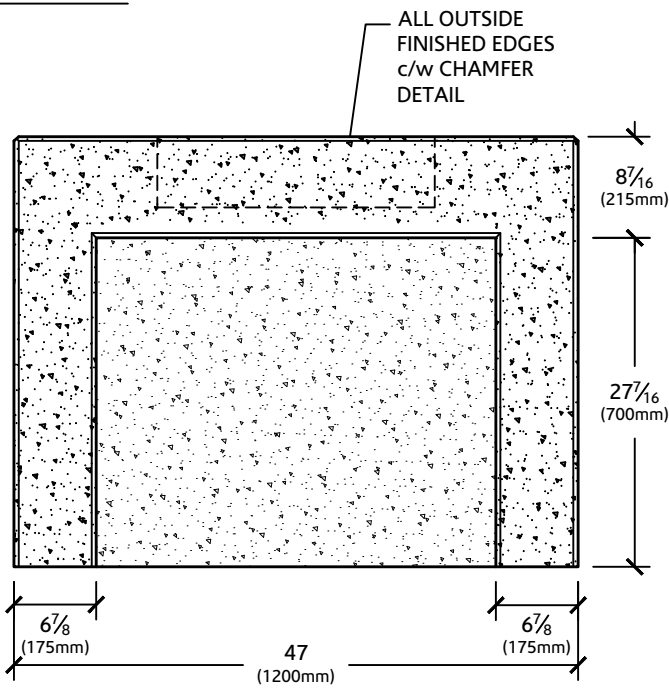
304 STAINLESS STEEL GRILL INSERT
(150mm x 490mm x 590mm), TO BE
MECHANICALLY FASTENED TO
PRECAST CONCRETE BASE



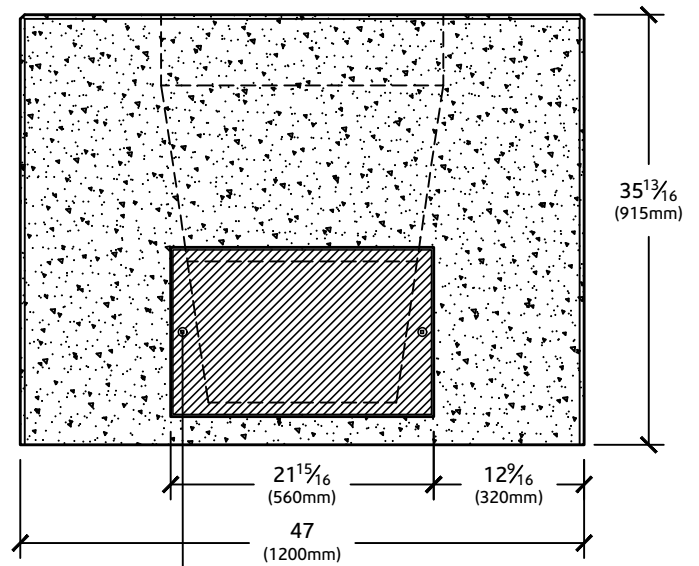
PLAN VIEW



SECTION VIEW



FRONT VIEW



REAR VIEW

1/4" x 20 SPANNER HEAD TAMPER PROOF
BOLT TO SECURE THE 1/8" x 350mm x 550mm
S.S. PLATE, REMOVABLE FOR CLEAN OUT

NOTES:

1. CONTRACTOR TO REFER TO ARCHITECTURAL SPECIFICATIONS FOR COLOUR, FINISH AND VALUE ADDED FEATURES
2. SUBMIT COLOUR AND FINISH SAMPLES FOR APPROVAL
3. WEIGHT OF BBQ K-GRILL - 2375 lbs



BBQ

BBQ K-GRILL

ED'S CONCRETE PRODUCTS
1266 ERIE STREET
STRATFORD, ONTARIO
N4Z 0A1

1-877-265-6590
www.edskoncrete.com
info@edskoncrete.com

